

## TECHNICAL SPECIFICATIONS

	9300	9600
<b>Wavelengths range</b>	• 320-1100 nm	• 190-1100 nm
<b>Light source</b>	• Halogen	• Xenon
<b>Spectral bandwidth</b>	• 4 nm	• 4 nm
<b>Incremental WL step</b>	• Reading: 0.1 nm • Setting: 1 nm	• Reading: 0.1 nm • Setting: 1 nm
<b>Wavelength accuracy</b>	• $\pm 1$ nm	• $\pm 1$ nm
<b>Wavelength repeatability</b>	• $\pm 0,5$ nm	• $\pm 0,5$ nm
<b>Absorbance range</b>	• $\pm 3,500$ Abs	• $\pm 3,500$ Abs
<b>Absorbance resolution</b>	• 0,001 Abs ou 0,1%T	• 0,001 Abs ou 0,1%T
<b>Photometric accuracy</b>	• $\pm 0,003$ Abs (0,5 Abs) • $\pm 0,005$ Abs (1,0 Abs) • $\pm 0,010$ Abs (2,0 Abs)	• $\pm 0,003$ Abs (0,5 Abs) • $\pm 0,005$ Abs (1,0 Abs) • $\pm 0,010$ Abs (2,0 Abs)
<b>Stray light</b>	• $< 0,1$ %T at 340 nm (GG375) • $< 0,1$ %T at 408 nm (GG408)	• $< 1$ %T at 198nm (KCl) • $< 0,1$ %T at 220nm (NaI) • $< 0,05$ %T at 340 nm (GG375) • $< 0,05$ %T at 408 nm (GG408)
<b>Flatness baseline</b>	• $\pm 0,002$ Abs	• $\pm 0,002$ Abs
<b>Scanning speed</b>	• Low – medium – fast > 600 nm/min	• Low – medium – fast > 800 nm/min
<b>Update</b>	• Via USB port	• Via USB port
<b>Interface</b>	• 1 USB-A, 1 USB-B, Ethernet RJ45	• 1 USB-A, 1 USB-B, Ethernet RJ45
<b>IP</b>	• IP 30 with drain in the cell compartment	• IP 30 with drain in the cell compartment
<b>Power Supply</b>	• 110-220V 50/60 Hz specific country cable	• 110-220V 50/60 Hz specific country cable
<b>Temperature (°C)</b>	• Use: 10°C to 35°C • Storage: 25°C to 65°C	• Use: 10°C to 35°C • Storage: 25°C to 65°C
<b>Dimensions (L x l x h)</b>	• 404 x 197 x 314 mm	• 404 x 197 x 314 mm
<b>Weight (net)</b>	• 4 Kg	• 4 Kg
<b>Warranty</b>	• 3 years	• 3 years

# AQUALABO

## UVILINE RANGE 9300 & 9600 SPECTROPHOTOMETER VISIBLE & UV-VISIBLE



### ORDERING INFORMATION

- **70VI0501A:** UviLine 9300 - VISIBLE 4 nm spectrophotometer
- **70VI0511A:** UviLine 9600 - UV/VISIBLE 4nm spectrophotometer
- **80ZZ0037:** Pre-aligned spare lamp for UviLine 9300
- **70VI0600:** Automated 5+1 cell changer / instrument driven \*
- **70VI0601:** Sipper / instrument driven \*
- **70VI0607:** 16 mm tube holder. Quick-lock system
- **70VI0603:** 10mm cell holder thermostated (Peltier system) / instrument driven \*
- **70VI0604:** 10mm cell holder (delivered standard with all UviLine series)
- **70VI0609:** 5mm-100mm universal cell holder & 16mm tube. Quick-lock system
- **70VI0610:** Sipper with Peltier effect
- **70MI0670:** PC LabPower software \*

\* Contact us for more information

**NEW**  
• Reference beam  
• Large color screen

- **New reference beam : more accurate, less drift**
- **New acquisition system : 2 times faster**
- **New large color screen : better ergonomy**
- **New special mode : calculation according mathematical formulation and integration of additional variables**
- **Lamps lifetime improved :** up to 4 years on Uviline 9300 and whole lifetime product on Uviline 9600
- **Guaranteed straylight < 1%**

## UVILINE RANGE: SMART COMBINATION OF INNOVATIONS

### Uviline 9300 and 9600 spectrophotometers combine the newest and the best innovations.

Thanks to the new reference beam, the new acquisition system and a powerful software, Uviline spectrophotometer are accurate and user friendly.

#### Perfect optical design

- Guaranteed Stray Light <1%
- Large Wavelength range: • 190 to 1100 nm (Uviline 9600) • 320 to 1100 nm (Uviline 9300)
- Bandwidth: 4nm
- Ambient light automatic compensation
- Fast scanning capability
- High light purity allowing a large reading range: + 3,500 Abs
- Automatic wavelength calibration

#### 5 measuring modes

- Absorbance/Transmittance
- Concentration
- Multi wavelength
- Spectrum Scanning
- Kinetic

#### Connections

- 2 USB port: storage/upload/download/update with USB stick, keyboard, mouse
- 1 Ethernet RJ45 port



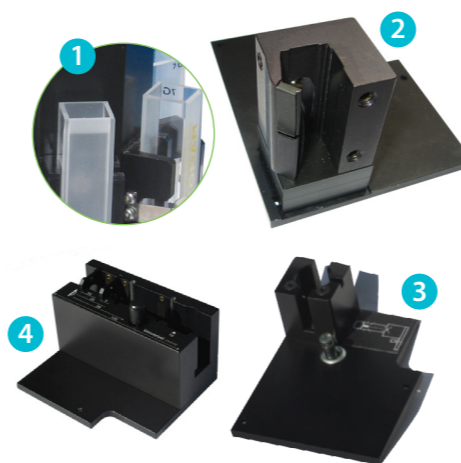
## SOFTWARE DETAILS

<b>Concentration</b>	<ul style="list-style-type: none"> <li>• From 0 to 10 standards. Graphic calibration curve management</li> <li>• 120 preinstalled methods to analyze more than 40 parameters</li> </ul>
<b>Kinetics</b>	<ul style="list-style-type: none"> <li>• Dynamic graphic curve display, graphic management: zoom, slope calculation, current Abs</li> </ul>
<b>Spectrum scanning</b>	<ul style="list-style-type: none"> <li>• Dynamic graphic curve display, graphic management: zoom, derivative, current Abs, peaks and valleys</li> </ul>
<b>Multi Wavelength</b>	<ul style="list-style-type: none"> <li>• Up to 10 WL - results formula</li> </ul>
<b>GLP compliant</b>	<ul style="list-style-type: none"> <li>• User login with 3 levels, parameters &amp; data storage</li> </ul>
<b>Storage capacity</b>	<ul style="list-style-type: none"> <li>• Internal: 100 methods / 30 graphics / 1000 data</li> <li>• With USB stick: limited to the key size</li> </ul>

## A FULL RANGE OF ACCURATE AND EASY-TO-USE ACCESSORIES

### The cell compartment of UviLine can receive a wide range of accessories. Easy to access, they expand the applications of spectrophotometers and improve their automation.

These accessories are easily installed thanks to the locking system "Quick-Lock" and ensure optimum positioning of the cells. Automatic accessories (multicell, Sipper, thermostatically controlled cell holder ...) are entirely controlled by the software.



#### SECAMAM cells 1

- The SECAMAM cells are a guarantee of quality and optical purity. More than 500 models of optical glass or quartz cells are proposed in our catalog.

#### Single cell holder up to 10 mm optical path 2

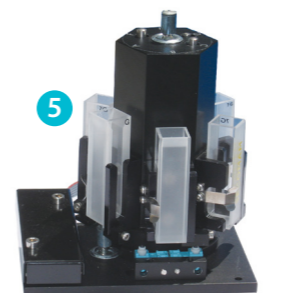
- It can receive 10 mm cells and, associated to the right diaphragm, it allows the use of microcells up to 50 µl.
- Thermostatable version in option.

#### 16 mm tube holder 3

- For 16 mm round tubes used for some micromethods.

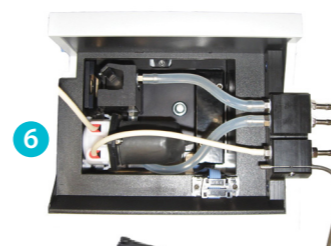
#### Universal Cell Holder 5-100 mm & 16 mm tube 4

- Suitable for cells 5/10/20/50/100 mm and 16 mm tubes, rigorously covers all uses of UviLine.



#### Automatic multi-cell turret 5 + 1 5

- It manages 5 samples and 1 blank.
- The turret is easily removable and re-insertable for easy change of the cells.
- Positioning is extremely accurate even for small volume cells.



#### Sipper 6

Compact, it is equipped with a peristaltic pump integrated to the cell holder:

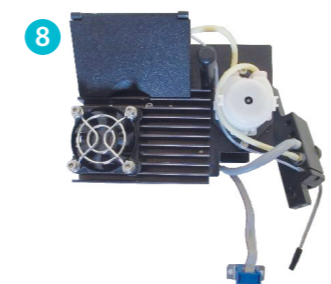
- Programmable suction 500 µl to 2000 µl
- Can be used with cells from 30 µl to 450 µl
- It secures the handling and increases productivity



#### Peltier 7

The Peltier temperature control system is compact, fast and accurate.

- Programming of the T°: from 10 °C to 60 °C
- Accuracy: 0.5 °C



#### Sipper with Peltier 8

It combines a suction system by peristaltic pump integrated in the cell holder and a Peltier temperature control system

- Programming of the T°: from 10 °C to 60 °C
- Accuracy: 0.5 °C
- Programmable suction 500 µl to 2000 µl
- Can be used with cells of 30 µl to 450 µl
- Ultra compact, fast and completely driven by the device