

# cX Series

## Cell Voltage/Temperature Monitoring System

- Combi module for Voltage & Temperature Measurement
- Battery Pack Potential /Temperature Measurement
- Corrosion Potential Measurement
- Cell Voltage Monitoring Of Electrolyzers Or Other Electrochemical Multicells
- Environmental Monitoring
- Modular, Low Profile Mechanical Design
- Independent Monitoring System With PC Via LAN (USB option)
- Monitoring Via LAN (USB option)



cX816: 8 ch temperature input  
& 16 ch voltage input

## Multichannel Voltage/Temperature Monitoring System

The cX series is a flexible systems to monitor voltage and temperature, suitable for use in a wide variety of applications.

The system has 16 voltage monitoring channels and can be extended to up to 128 channels. On the other hand, it provides 8 channels of temperature monitoring which is expandable up to 64 channels.

For safety purposes, when it detects that the operating voltage/temperature is out of the defined range, the user will be alarmed.

### Voltage Monitoring

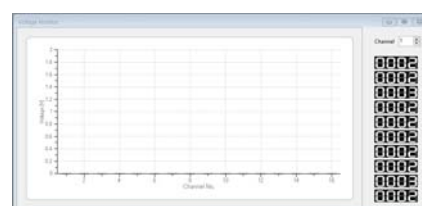
- Voltage range :  $\pm 10V$  or  $\pm 5V$  for each channel
- Voltage range in common mode :  $\pm 275V$  for all channel
- Programmable scan rate :
  - max. 10 sample per sec per channel
- Resolution : 14 bit (16 bit option)
- Sampling time : 100ms per channel
- Input impedance
  - differential : 800kOhm
  - common mode : 200kOhm
- 10/100 Ethernet PC direct (Full speed USB 2.0 interface, option)
- Channel expandable up to max. 128 channel

### Temperature Monitoring

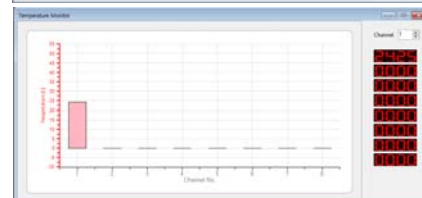
- Sensor type : insulation K-type thermocouple
- Resolution : 14bit, 0.25°C
- Detects thermocouple shorts to GND or VCC
- Sampling rate : max. 100 samples/sec
- Channel expandable up to max. 64channel

### cX Software

- Works with PC application software
- LAN communication (USB option)
- Sampling start/stop function
- Alarm safety & cut-off conditon
- Supply .ini files to control cX software(option)



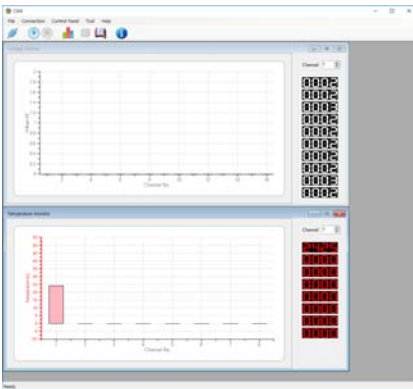
Cell Voltage Monitor



Temperature Monitor

# cX Software

## ● Main Screen



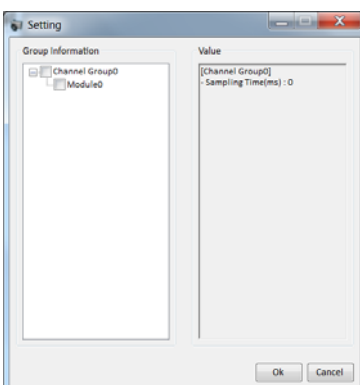
- Admin mode : enables parameter setting
- Ext Mode : external control mode. enables to work in conjunction with ZIVE SM SmartManager program.

## ● Monitor Group



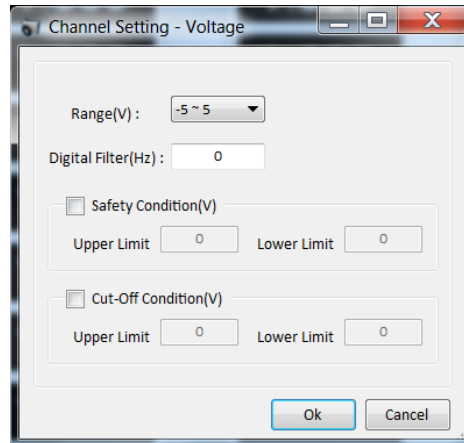
- displays real time voltage & temperature measurement information of unit cells
- each voltage/temperature availability is selectable.
- user can set voltage/temperature value of chosen channel.

## ● Channel Group Setting



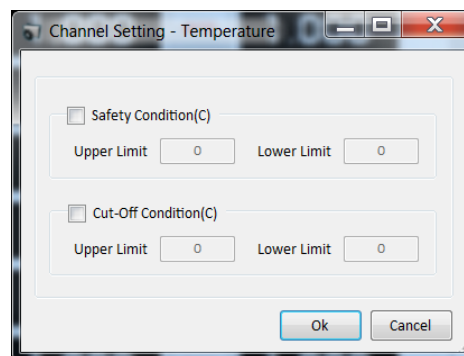
- left side of the window shows group information while right side shows setting value.
- by double-clicking each AVx/ATx, user can set values.
- by selecting the checkbox on the left side of each AVx/ATx, voltage/temperature can be selected subject to the availability.

## ● Channel Setting - Voltage



- measurement range : -5V ~ 5V, standard
- digital filter : 5Hz, standard
- safety condition : if the measured value exceeds configured limit values, the system will be stopped.
- cut-off condition : if the measured value exceeds configured limit values, the current experiment will be stopped and then move on the the next step.

## ● Channel Setting - Temperature



- safety condition : if the measured value exceeds configured limit values, the system will be stopped.
- cut-off condition : if the measured value exceeds configured limit values, the current experiment will be stopped and then move on the the next step.

## ● Data Viewer

