

Designed by ZIVE LAB



# High Compliance Voltage Electrochemical Workstation ZIVE SP5HC20

Including Internal FRA/ZRA  
Compliance Voltage of 20V

*For  
Corrosion  
Battery/Fuel Cell  
Super Capacitor/Solar Cell  
Material Testing*

# Electrochemical Workstation ZIVE SP5HC20

The **ZIVE SP5HC20**, the power potentiostat/galvanostat/FRA with a compliance voltage of  $\pm 20V$ , is the best choice for the complete DC and impedance characterization of coatings and corrosion research. Also, its versatile functions make it suited to other applications including battery, fuel cell, solar cell, and other fundamental electrochemical analysis.

The system is designed under FPGA and DSP control with high speed capability.

## DAC Control

: Two sets of high speed 16bit DAC(50MHz) for offset & scanning & one set of 16bit DAC(1MHz) for auxiliary analog output control

## ADC Reading

: Two sets of 16 bit 500kHz ADC for reading voltage/current and 4 channel 16bit 250kHz ADCs for auxiliary data input such as temperature, auxiliary voltage etc. It provides high frequency EIS, fast pulse techniques and high speed sampling time.

The **ZIVE SP5HC20** is equipped with a Frequency Response Analyzer(FRA) for system as standard and it provides high performance impedance measurements over the frequency range 10uHz to 1MHz. The ZRA(zero resistance ammeter) function can measure max. 2Amps in galvanic corrosion technique. The system is supplied with four(4) advanced software packages, which are categorized by application fields. With this advanced software packages, user can widen **ZIVE SP5HC20**'s flexibility.

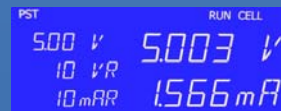
## System Features

- Versatile Potentiostat/Galvanostat/Impedance Analyzer with a compliance voltage of  $\pm 20V$
- Compact size with full functions
- FRA function to control an external electronic load or 3rd party potentiostat/galvanostat is available as standard
- 14 EIS techniques capability including multisine
- Current interrupt IR measurement  
IR compensation(dynamic, positive feedback)
- Bipolar pulse capability
- Voltage pulse or current pulse charge/discharge test(GSM,CDMA etc.), sine wave function for ripple simulation in battery test package & pulse plating available
- High speed data sampling time
  - 50usec/sample in burst mode
  - 2usec/sample in fast mode
  - 1msec/sample in normal mode
- Fast sweep mode(5000V/sec with 10mV data sampling)
- 3 measurement/control voltage ranges & 12 measurement/control current ranges
- Internal 295,000 data point storage and continuing experiment regardless of PC failure
- Full software packages are included as standard
  - EIS test software package(EIS)
  - Corrosion test software package(COR)
  - Energy software package(BAT)
  - Electrochemical analysis software package(EAS)
- Multichannel configuration available
- Free software upgrade

## Hardware Features

- $\pm 10V@2Amps$  control range
- Wide current ranges(2A to 20pA) for various applications (200pA and 20pA ranges are with gain)
- Smart LCD display
- Independent operation by DSP with FPGA
- Built-in FRA for impedance measurement
- Simultaneous 3 auxiliary voltage measurements
- Temperature measurement as standard
- 1 auxiliary analog output
- 3 digital outputs & 2 digital inputs
- Separated power and sensing line
- External booster(ZB series) interface for high current application

### Smart LCD Display

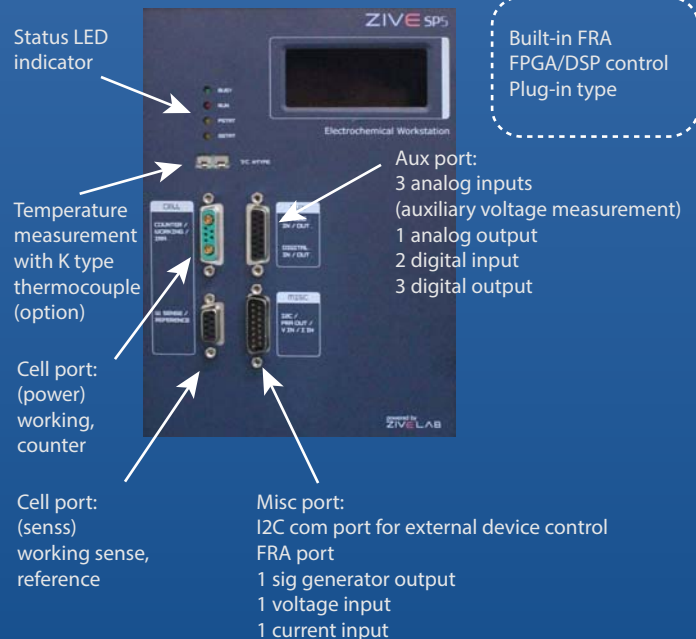


DC Mode



EIS Mode

### Front View



## Versatility

The ZIVE SP5HC20's system comes with additional three analog inputs (auxiliary voltage input) and 1 analog output along with 3 digital outputs and 2 digital inputs, and one temperature input for K type thermocouple. It will help users expand the usage of the instrument.

For example,

1. User can measure the voltage between working and reference electrode and, by using 2 additional analog inputs(auxiliary voltage input), user can also measure the voltage between reference and counter electrode and between working and counter electrode as well.
2. With analog output, the system can control rotating speed of a rotator, MFC flow rate etc. by  $\pm 10V$  full scale.
3. User can control on/off of max. 3 devices by DO etc.
4. This system can interface with an external booster(ZB series).

## Safety and Maintenance

1. Even though the communication failure occurs between PC and ZIVE SP5HC20, the system continues its experiment on channel and saves the data into ZIVE memory up to 295,000 data point set. After the communication is restored, ZIVE will transfer saved data to PC automatically or user can transfer data when he/she wants. This function will be highly efficient for long time experiment.
2. User can define a safety condition setting by inputting his/her own safety levels for voltage, current, temperature etc. If the measurement value exceeds this setting value, the system will automatically stop to protect the system and cell.
3. If the control value of voltage or current is different from measured value, the experiment will stop automatically to protect the cell.
4. Automatic calibration function is available for user calibration.
5. The system is controlled from a PC via USB.

## Application

The ZIVE SP5HC20 electrochemical workstation is ideal for corrosion research for developing a new corrosion inhibitor and coating technologies. Also, high compliance voltage allows for the growth of thin film electrodes and nanodeposition. This system can be also used for evaluation power device research such as battery material, fuel cell, supercapacitor, and solar cell.

### ■ Corrosion



The system is suitable for measuring low corrosion rates and EIS test to evaluate corrosion. The ZRA function is supplied for galvanic corrosion measurement.

### ■ Batteries



The system is very well adapted for researches on the cycling behavior of battery. It provides various control modes for battery cycling. It can support EVS (electrochemical voltage spectroscopy)/GITT/PITT test. Fast pulse capability for GSM, CDMA test is included in battery test software package. Pulse profile measurement function to check pulse shape is available. For ripple simulation test, sine wave charging/discharging is available.

### ■ Fuel Cells



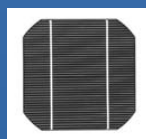
The ZIVE SP5HC20 is ideal for characterizing the fuel cells and anodic/cathodic process mechanism at development and research grade. This system can be directly used for PEMFC, DMFC, and DEFC etc. The FRA can control an external electronic load for EIS measurement of fuel cell. I-V curve measurements in a full range of available current (autorange option is active during the I-V scan in order to ensure measurement with continuously high resolution).

### ■ Super Capacitors



The ZIVE SP5HC20 has fast potentiostat circuit with high speed data acquisition (50usec/point, burst mode). This function is well applicable to super capacitor testing. Charging/discharging capability is used for this application.

### ■ Solar Cells



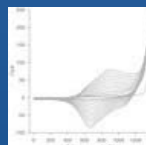
Solar cell development and production requires extensive material and device testing to improve efficiency and match individual cells for panel construction. The ZIVE SP5HC20 is the best solution for photovoltaic cell characterization. With system's AI, AO, DI, and DO, the system can monitor other device's signal and also control them.

### ■ Sensors



The ZIVE SP5HC20 can be used for sensor research using with DNA chips or screen printed electrodes. System's minimum current range is 20pA(with gain). Cyclic voltammetry, Chronoamperometry and EIS measurement can be used for this application.

### ■ General Electrochemistry



The ZIVE SP5HC20 is also suitable for the development of bio-research, electron transfer kinetic studies and electrochemical analysis of compounds at low trace levels, where multichannel DC and impedance analysis is beneficial in providing high throughput of results.

## Main Software SM

The Smart Manager (SM) is to control ZIVE SP5HC20 model and it provides user defined sequential test by using sequence file, technique menu and batch file. The batch file allows the users to do a serial test by combining sequence files and/or technique files.

The SM software is easy to use and supports various electrochemical experiments including functions of system control, schedule file editor, real time graph, analysis graph, user calibration, and data file treatment etc.

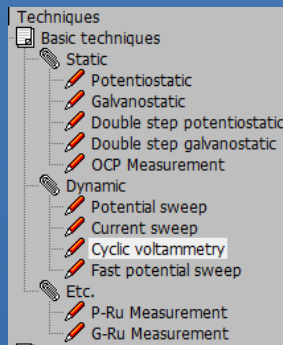


Technique list

## Basic Techniques

### Basic techniques with standard functions

- 1) Potentiostatic
- 2) Galvanostatic
- 3) Double step potentiostatic
- 4) Double step galvanostatic
- 5) OCP measurement
- 6) Potential sweep
- 7) Current sweep
- 8) Cyclic voltammetry
- 9) Fast potential sweep
- 10) Potentiostatic Ru measurement
- 11) Galvanostatic Ru measurement



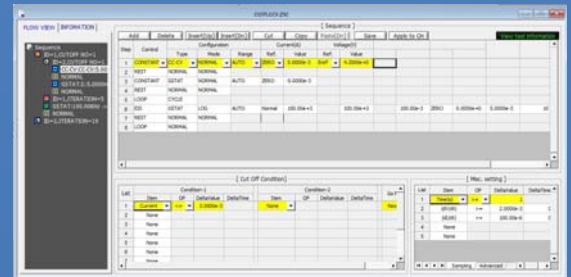
The above functions can be used sequentially by step control function.

### Sequence editor

User can design his/her experiment procedure by using TASK sequential routine editor.

### Control Task Parameters

Control Mode		
Constant	GSTAT	constant current control
	Crate	constant Crate control
	PSTAT	constant voltage control
	POWER	constant power control
	LOAD	constant load control
	CC-CV	constant current constant voltage control
	Crate-CV	Crate constant voltage control
	CP-CV	constant power constant voltage control
	CL-CV	constant load constant voltage control
	Id	Id control
	Is	Is control
	OCP	OCP control
Step	GSTAT	current step control
	PSTAT	potential step control
Sweep	GSTAT	current sweep control
	FAST-G	fast current sweep control
	PSTAT	potential sweep control
	FAST-P	fast potential sweep control
EIS	GSTAT	galvanostatic EIS
	PSTAT	potentiostatic EIS
	OCP	OCP EIS
	PSUEDO	pseudo galvanostatic EIS
	HFR G	galvanostatic HFR
	HFR P	potentiostatic HFR
	MsineG	galvanostatic multisine EIS
	MsineP	potentiostatic multisine EIS
Rest		rest control
ZRA		ZRA control
Loop		loop control
Pulse	Vpulse	voltage pulse control
	Ipulse	current pulse control
	GSINE	current sine wave control
	PSINE	potential sine wave control



Sequence editor

- Constant potential, current, C-rate, power, load, OCP
- Sweep potential, current
- Fast sweep potential, current
- Staircase potential, current
- CC-CV, CP-CV, CL-CV, Crate-CV control
- Id, Is control
- EIS control
- Pulse or sinewave control
- Rest(voltage monitoring only)
- Loop(cycle) control

Condition-1		
Item	OP	Delta/Value
Step Time	>=	30
None		
Step End		
Step Time		
Current		
[Density]		
Voltage		
[Capacity]		
-dV		
dI/dt		
dV/dt		
dT/dt		
Temp. (C)		
AUX1		
AUX2		
AUX3		
Test Time		
Loop Time		
Cycle Time		
Eoc		
WtR		
LCC(%)		
LCD(%)		
FCC(%)		
FCD(%)		
Power(W)		
SumQ(AHr)		
SumE(VHr)		
Loop Next		
DI Ch		
Crate		

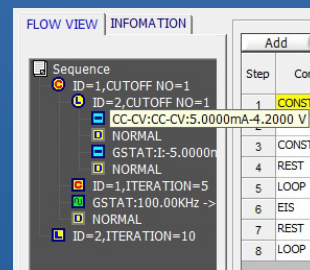
Cutoff condition

### Sampling Condition

- time, |dI/dt|, |dV/dt|, |dT/dt|, |dA1/dt|, burst time

### Flow View

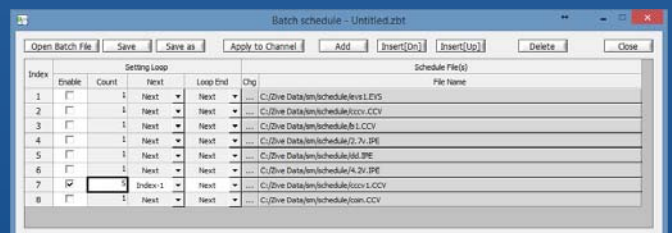
- User can see the sequence flow at a glance.



Flow view

### Batch function

User can design batch file including multiple technique files and/or sequence files. With this batch file, user can experiment several techniques/sequence in series automatically.





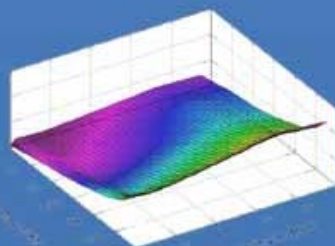
## Smart Manager Advanced Software Package

For a wide range of application, advanced software packages for specific experimental techniques are available. Each software package's upgrade will be provided at free of charge.

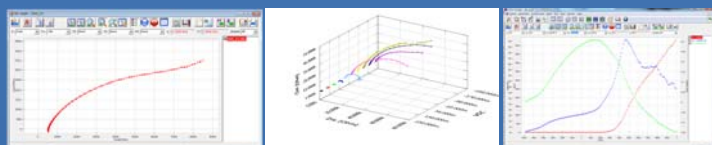
### ■ EIS Software Package(EIS)

1. Potentiostatic EIS
2. Galvanostatic EIS
3. Pseudo galvanostatic EIS
4. OCP<sup>(\*)</sup> EIS
5. Potentiodynamic PEIS
6. Galvanodynamic GEIS
7. Potentiodynamic HFR
8. Galvanodynamic HFR
9. Potentiostatic HFR monitor
10. Galvanostatic HFR monitor
11. Multisine potentiostatic EIS
12. Multisine galvanostatic EIS
13. Intermittent potentiostatic EIS
14. Intermittent galvanostatic EIS

(\*1) The system measures open circuit potential before for each frequency change and apply AC sine wave on this potential.



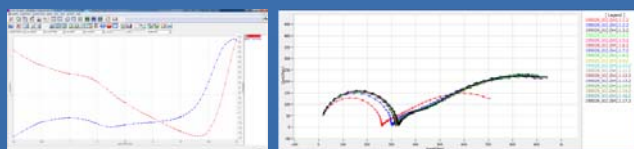
*Coin cell intermittent PEIS  
3D Nyquist plot by ZMAN*



*Galvanostatic EIS*

*Potentiodynamic PEIS*

*Rs, Cp & Idc vs Vdc plot*



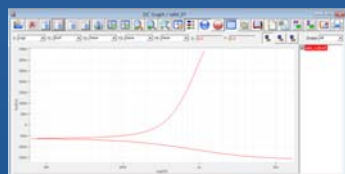
*Coin cell multisine EIS data*

*Intermittent Potentiostatic EIS*

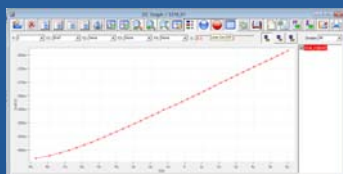
### ■ Corrosion Software Package(COR)

Corrosion technique supports IR compensation.

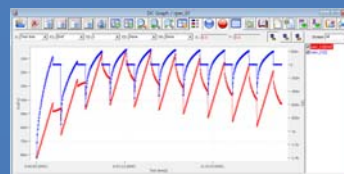
1. Tafel(Tafel experiment)
2. Rp(Polarization resistance)
3. RpEc trend
4. PDYN(Potentiodynamic)
5. CYPOL(Cyclic polarization resistance)
6. GDYN(Galvanodynamic)
7. Reactivation
8. Galvanic corrosion
9. Potentiostatic ECN
10. Galvanostatic ECN
11. ZRA mode ECN



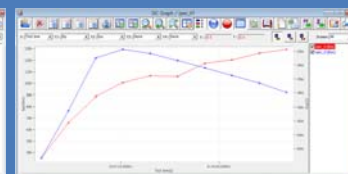
*Tafel plot*



*Linear Polarization Resistance*



*Monitoring Ecorr & measuring  
polarization resistance periodically*



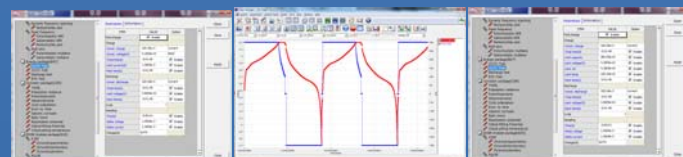
*Intermittent potentiostatic EIS*

### ■ Battery Software Package(BAT)

BAT software supports IR measurement.

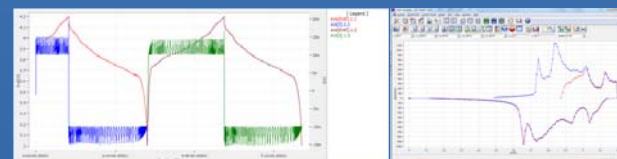
#### 1. Battery test techniques

- CC/CV test for cycle life test of lithium battery
- CC/CC test for cycle life test of NiCd or NiMH battery
- Discharging test
- EVS(Electrochemical voltage spectroscopy)
- Variable scan rate CV
- Potentiostatic IV curve
- Galvanostatic IV curve
- Steadystate CV
- GITT(Galvanostatic intermittent titration technique) test
- PITT(Potentiostatic intermittent titration technique) test



*CC/CV test*

*CC/CC test*



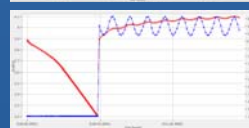
*EVS test raw data*

*EVS graph format  
(dQ/dV vs. V)*

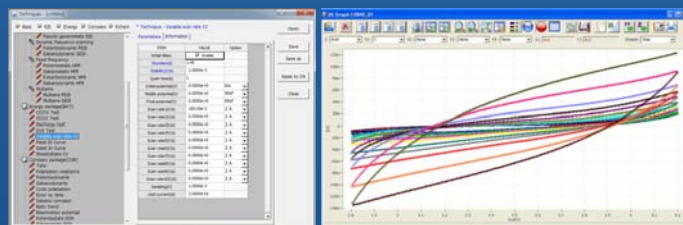
- Pulse mode is available for GSM & CDMA profile. Pulse shape profile can be measured by user's demand.



*Pulse shape profile monitor  
(micro seconds order)*



*Current sine wave  
(charge ripple simulation)*



*Variable scan rate CV*

## 2. Control mode

- Charge: CC, CC-CV, pulse, sine wave
- Discharge: CC, CP, CR, pulse, sine wave

## 3. Cutoff condition

- time, voltage, current, power, temperature, auxV etc.

Various battery charge/discharge test is available including pulse discharge for GSM and CDMA application.

## ■ Electrochemical Analysis Software Package(EAS)

### 1. Step techniques

CA(Chronoamperometry), CC(Chronocoulometry), CP(Chronopotentiometry)

### 2. Sweep techniques

LSV(Linear sweep voltammetry), SDV(Sampled DC voltammetry), Fast CV, Fast LSV

### 3. Pulsed techniques

DPV(Differential pulse voltammetry), SWV(Square wave voltammetry), DPA(Diff. pulse amperometry), NPV(Normal pulsed voltammetry), RNPV(Reverse normal pulse voltammetry), DNPV(Differential normal pulse voltammetry)

Each software package's upgrade will be provided at free of charge.

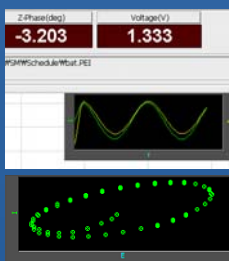
## Control & Real Time Graph

Smart Manager provides virtual control panel for control & data acquisition with real time graph.

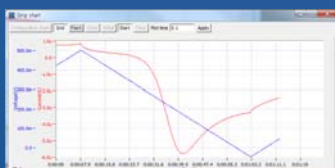
User can control and monitor for specific channel in details and he/she can monitor data in VOI(value of interest) window and channel status in one window. Real time graph's X,Y axis format will be changed per technique automatically. It can be defined by user's demand per techniques.

For experiment using sequence file or batch file, user can designate X,Y parameter on three different real time graph. The real time graph's format can be also selected.

The real time graph and VOI will be changed depending on DC test or impedance test automatically. The virtual control panel always displays the graph for recent test result. For impedance measurement, wave monitor will be displayed on real time graph to check wave's quality. This monitor can be switched to Lissajous(I vs. E) plot.



## ■ Strip Chart

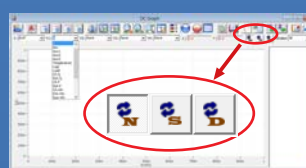


Strip chart recorder function provides real graph function independently. You can monitor 2 Y axis data such as voltage, current, auxV1,2,3, temperature, power, and capacity etc. in real time.

## Graph



Smart Manager's graph function is to simplify the operation. There are 3 kinds of graph per each experiment. You can change X, Y1, Y2, Y3, Y4 axis parameter as you want. Each graph provides shortcut buttons. When you click these buttons, the format of the graph will be changed accordingly.



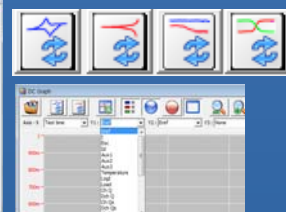
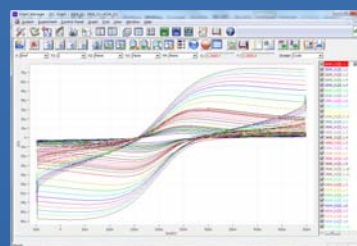
: value divided by weight

In DC and Cycle graph, whenever you click or , the parameters which are related to current such as current, capacity, energy, power, load, etc., are changed into calculated specific value or density value, respectively.

: value divided by active area

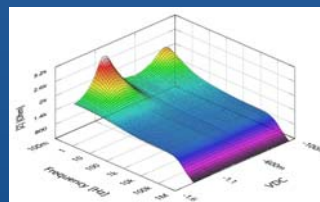
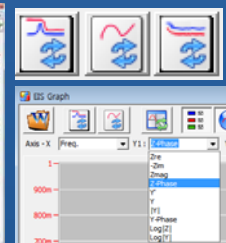
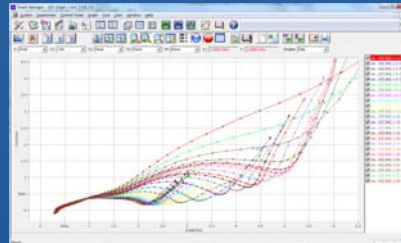
### 1) DC Graph

- For general data display
- 4 shortcut buttons: I vs. V, E vs. LogI, V, I vs. time, V vs. Q
- Graph parameters: time, Eref, I, Eoc, Id, Aux1, Aux2, Aux3, temp, LogI, Load, ChQ, DchQ, ChQs, DchQs, Ch P, Dch P, Ch-Wh, Dch-Wh, Sum Wh, Sum Q, Sum |Q|, |Q|, Rp, dQ/dV



### 2) EIS Graph

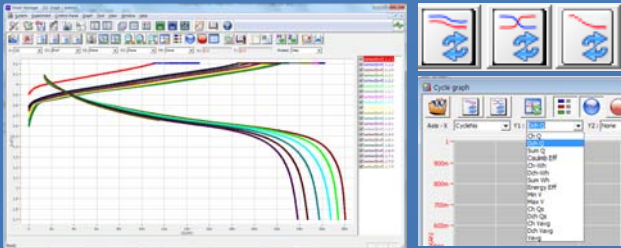
- For EIS data display
- 3 shortcut buttons: Nyquist plot, Bode plot, Cs vs. frequency
- Graph parameters: Frequency, Zre, -Zim, Zmag, Zph, Y, Yimg, Y |Y|, Yph, LogZ, LogY, Rs(R-C), Cs(R-C), Rp(R|C), Cp(R|C), Rs(R-L), Ls(R-L), Q(R-L), time, Vdc, Idc, temp, Aux(1,2,3)



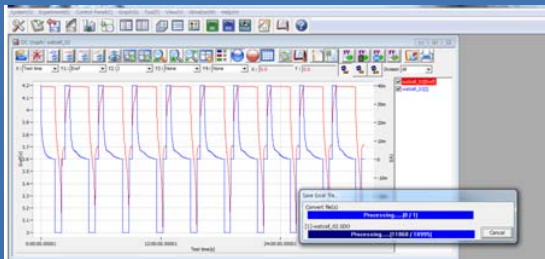
3D Bode Plot by ZMAN  
Technique used: Potentiodynamic impedance measurement  
by using a corrosion cell

## 3) BAT Graph

- For battery cycle data display
- 3 shortcut buttons: cycle capacity, cycle average, Log(cycle No) vs. depth of discharge plot.
- Graph parameters: cycle number, Ch Q, Dch Q, Sum Q, Coulomb Eff, Ch-Wh, Dch-Wh, Sum Wh, Energy Eff, MinV, MaxV, ChQs, DchQ, ChVavg, DchVavg, Vavg



## Data Export to ASCII & Excel File



Selectable between 'Convert data on graph only' and 'Convert selected file(s)'

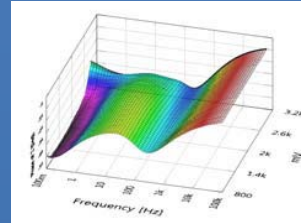
## Data Analysis Software

ZIVE data file can be used for analysis by using external IVMAN™ software for DC analysis, IVMAN DA™ software for battery data analysis, IVMAN PA™ software for photo-voltaic cell data analysis and ZMAN™ software for EIS data analysis without license.

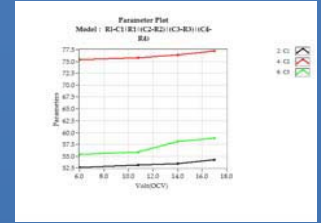
## ZMAN™ EIS Data Analysis Software

- Model simulation and fitting
- 2D- and 3D-Bode- and Nyquist plots
- Automatic equivalent circuit model search function
- Project concept to handle multiple EIS data analysis
- Parameter plot from fitted elements value
- Compatible with data format from Zahner, Gamry, Ametek etc. (License code is needed.)
- Various weighting algorithm
- Model library and user model
- KK plot
- Batch fitting for project data
- Impedance parameter simulation
- Interpolate bad data
- Black-Nichols plot
- 3D graph setting option
- Improved model editor
- Application model library for automatic searching
- Parameter simulation of model
- Genetic algorithm option for initial guessing
- Automatic initial guessing
- Trace movie function on fitting
- Free for ZIVE's data format(\*.seo, \*.wis) analysis (No license code required.)
- Circle fitting
- Data editing available (insert, delete, edit)
- Add/subtract element parameters
- Add/subtract model parameters

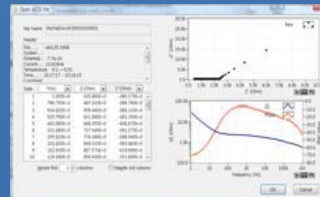
- Impedance, Z in polar, admittance, Y in Polar, modulus, M in polar, dielectric constant, E in polar. data display
- Empty cell capacitance calculation
- Find file function
- Data replacement by formula function
- Cursor data display
- Model finding result automatic sorting by Chi square value
- R, C, R, L, R, Q preview & graphic
- ZHIT function
- Mott-Schottky analysis
- Donor density vs. Vfb graph
- C vs. voltage graph



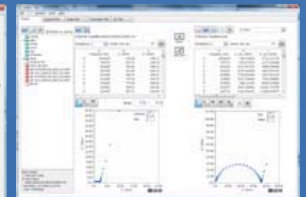
3D Bode plot for series measurement



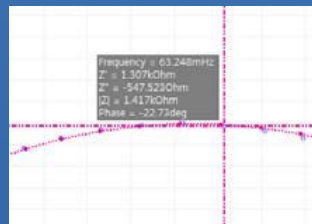
Parameter plot



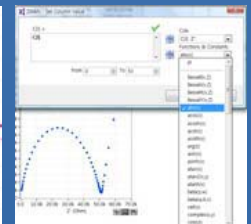
Importing 3rd parties ASCII data file



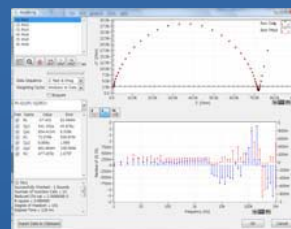
Project manager with data preview



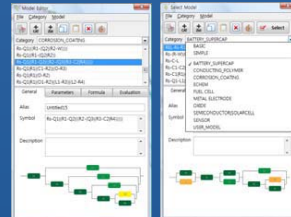
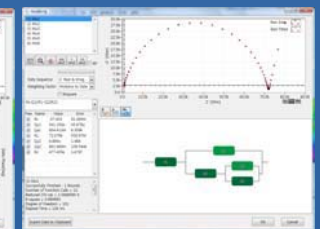
Cursor data display



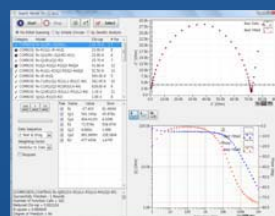
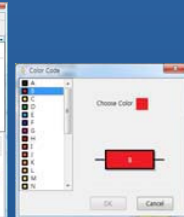
Data replacement by formula function



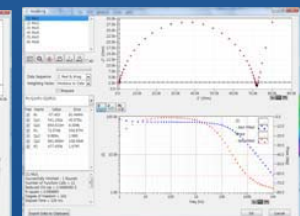
Fitting display



Model editor & model library



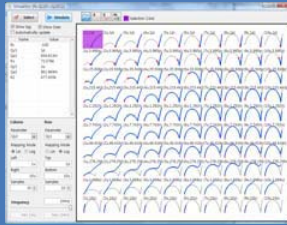
Automatic model searching



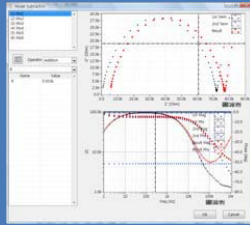
LEVM fitting



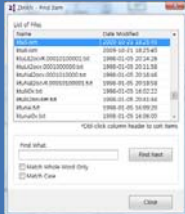
# Electrochemical Workstation ZIVE SP5HC20



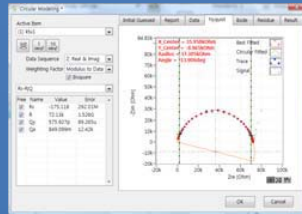
Parameter simulation



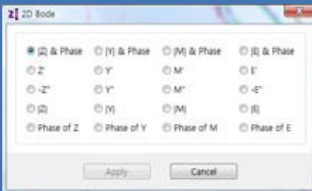
Element add/subtraction



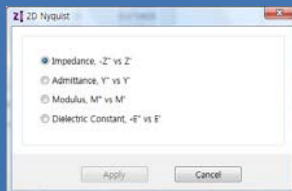
Finding data file menu



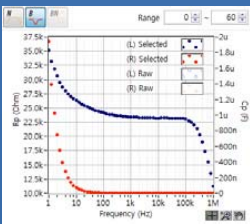
Circular fitting



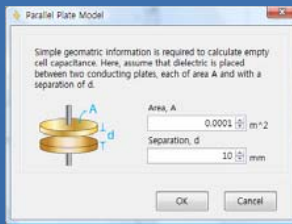
2D Nyquist plot



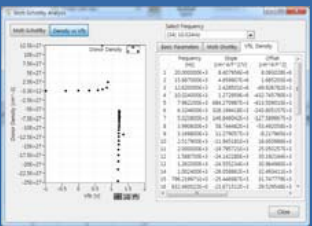
2D Bode plot



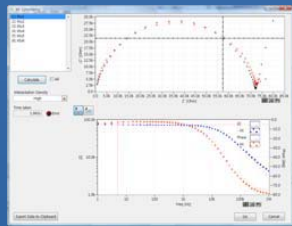
$R_p, C_p$  vs frequency ( $R/C$ )



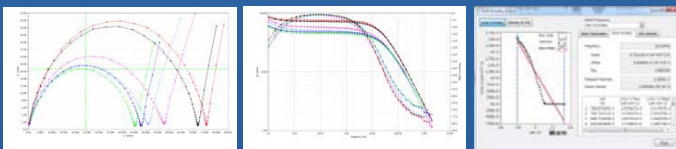
Empty cell capacitance



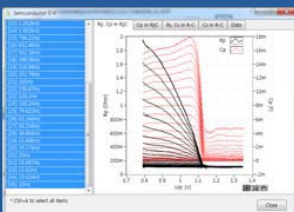
Donor density vs.  $V_{fb}$  graph and analysis



KK consistency



Mott-Schottky analysis window



C/R-V graph

## IVMAN™ DC Data Analysis Software

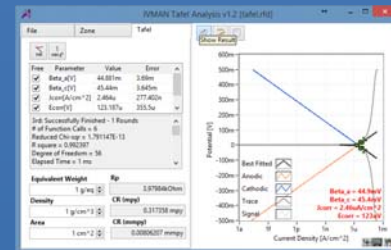


- IVMAN™ software package consists of
  - IVMAN software
  - IVMAN utilities
    - IVMAN main software
    - IVMAN differential analysis software
    - IVMAN photo voltaic cell analysis.
    - IVMAN Tafel analysis
    - IVMAN extractor
    - IVMAN peak find module



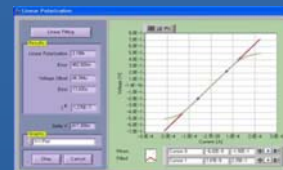
## IVMAN TA™ Tafel Analysis

- Simple Tafel calculation

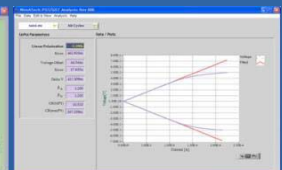


## IVMAN™ Main Software

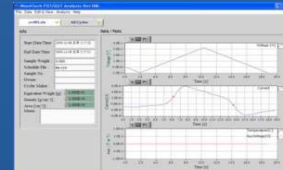
- Ideal for DC corrosion data analysis and electro-analytical data analysis
- Initial guessing function on Tafel analysis
- Polarization resistance fitting
- 3D graph
- Find peak function
- Interpolation, differentiation, integration etc.
- Reporting function



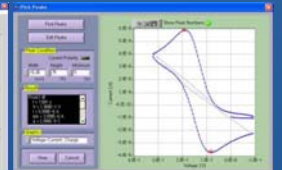
Polarization resistance fitting



Polarization analysis result



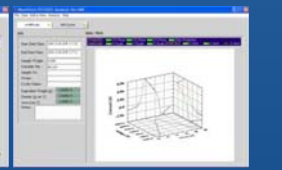
Time graph



Find peak menu



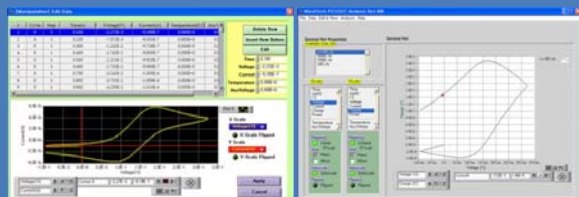
CV graph



3D graph



# Electrochemical Workstation ZIVE SP5HC20

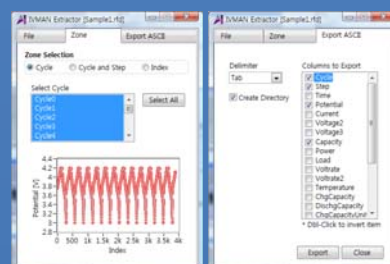


Edit data menu

Universal graph

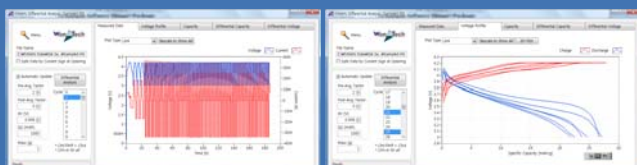
## IVMAN EX™ Extractor

- Extracting data by cycle number or step
- Exporting ASCII file



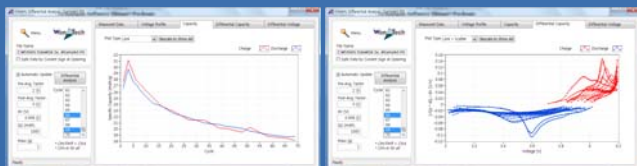
## IVMAN DA™ Battery Test Data Analysis Software

- Battery test data analysis
- Electrochemical voltage spectroscopy (dQ/dV vs. V)
- Voltage vs. Capacity analysis (V vs. Q)
- Cycle graph (Q vs. cycle)
- Differential voltage graph(dV/dQ vs. Q)



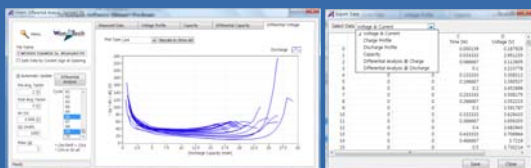
Measured data

V vs. Q



Cycle graph

dQ/dV vs. V

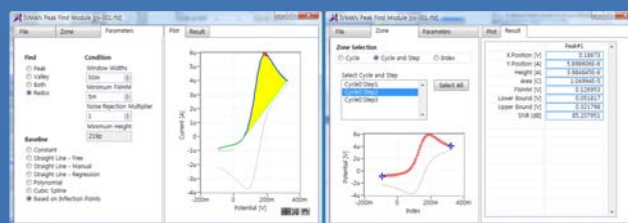


dV/dQ vs. Q

Export ASCII file

## IVMAN PF™ Peak Find Module

- Independent peak finding software



## Optional Accessories

- Multiplexer
  - It allows sequential measurements on complete electrochemical cells, up to 8 cells per unit.



- Cell Kit



Corrosion Cell Kit



Flat Cell Kit



Plate Test Cell

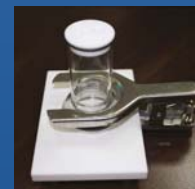


Plate Test Cell



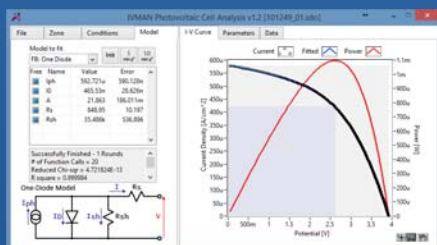
H-Type Cell



H-Type Cell



## IVMAN™ Photovoltaic Cell Analysis



- Automatic analysis of parameters
  - open circuit voltage, open circuit current, max. power, efficiency photo induced current, diode quality factor, series resistance, etc.

# Electrochemical Workstation ZIVE SP5HC20

- Power Booster
  - for high voltage/high current application
  - modular type design
  - EIS capability
  - sine wave simulation available



- Battery Jig & Coin Cell Jig
  - for cylindrical cell and/or coin cell
  - 4 probe type



- Pouch Cell Jig
  - pull-down or banana connector type contact
  - 4 contact point type (Kelvin probe)



- Battery Test Cell
  - test cell for 2 or 3 electrode measurement
  - test cell for aqueous electrolyte
  - test cell for pressure monitoring
  - test cell for gas diffusion electrode
  - test cell for time-resolved gas analysis
  - test cell for optical and X-ray characterization in the reflective mod
  - test cell for high-throughput testing, etc.



ECC-Ref



ECC-Opto-Std



PAT-Cell-Press



PAT-Stand-4 with PAT-Cell

- Electrochemical Dilatometer
  - for the measurement of height changes in aprotic as well as aqueous electrolytes
  - ECD-3 : displacement resolution  $\leq 50\text{nm}$
  - ECD-3-nano : displacement resolution  $\leq 5\text{nm}$



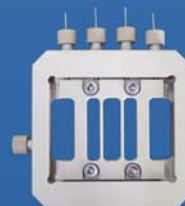
- Through-Plane Conductivity Test Jig
  - for through plane conductivity measurement
  - 2 probe type



- Single Cell Hardware Fixture
  - for PEMFC and DMFC
  - max. temp. :  $120^\circ\text{C}$  or  $180^\circ\text{C}$
  - active area : 5, 9, 25, 50,  $100\text{cm}^2$
  - MEA is not included.



- Membrane Conductivity Cell
  - for 5, 9 and  $25\text{cm}^2$  fuel cell hardware fixture
  - material : PEEK(cell body), platinum(wire)
  - operating temp. : up to  $130^\circ\text{C}$



- Universal Electrode Holder
  - electrode and glass vial are not included.



- Faraday Cage
  - size :  $300 \times 300 \times 398\text{mm}$ (WxDxH)



## Specification

Main System	
PC communication	USB2.0 high speed
Line voltage	100~240VAC, 50/60Hz
Max. output power	48Watt
Size	179x270x378.4mm(WxHxD)
LED indicator	Run, Busy, Potentiostat, Galvanostat

System	
Cell cable	1 meter shielded type(standard) working, reference, counter, working sense
Control DAC	DSP with FPGA 2x16bit DAC(50MHz) for bias & scan 1X16bit DAC(1MHz) for analog output
Data acquisition ADC	2x16bit ADCs(500kHz) for voltage, current 4x16bit ADCs(250kHz) for auxiliary voltage and temperature reading
Calibration	Automatic
Filter selection	4ea(5Hz, 1kHz, 500kHz, 5MHz)
Scan rate	0~200V/sec in common mode 0~5000V/sec in fast mode
Internal data memory	295,000 points
LCD display	DC & EIS mode automatically

Power Amplifier(CE)	
Power	40Watt (20V@2A)
Compliance voltage	±20V
Max. current	±2A
Control speed selection	8ea
Bandwidth	1MHz
Slew rate	10V/usec

Potentiostat Mode (voltage control)	
Voltage control	
Control voltage range	±10V, ±1V, ±100mV
Voltage resolution	0.0015% f.s.(0.3mV,30uV,3uV)
Voltage accuracy	±1mV ±0.1% of setting
Max. scan range	±10V vs. ref. E
Current measurement	
Current range	12 ranges(auto/manual setting) 2nA~2A 20pA & 200pA with gain
Current resolution	16 bit 60uA, 6uA, 600nA, 60nA, 6nA, 600pA, 60pA, 6pA, 600fA, 60fA, 6fA, 0.6fA
Current accuracy	±10pA ±0.1% f.s.(gain x1) >200nA

Galvanostat Mode (current control)	
Current control	
Control current range	max. ±2A ± full scale depending on selected range
Current resolution	16 bit 60uA, 6uA, 600nA, 60nA, 6nA, 600pA, 60pA, 6pA, 600fA, 60fA, 6fA, 0.6fA
Current accuracy	±10pA ±0.1% f.s.(gain x1) >200nA
Voltage measurement	
Voltage range	±10V, ±1V, ±100mV
Voltage resolution	16 bit 0.3mV, 30uV, 3uV
Voltage accuracy	±1mV ±0.1% of reading

Electrometer	
Max. input voltage	±10V
Input impedance	>2x10 <sup>13</sup> Ω  4.5pF
Bandwidth	>22MHz
CMRR	>114dB

EIS(Internal FRA) for System	
Frequency range	10uHz~1MHz
Frequency accuracy	100ppm(0.01%)
Frequency resolution	5000/decade
Amplitude	0.1mV~5Vrms(Potentiostatic) 0.1~70% f.s.(Galvanostatic)
Mode	<b>Static EIS:</b> Potentiostatic, Galvanostatic, Pseudogalvanostatic, OCP <b>Dynamic EIS:</b> Potentiodynamic, Galvanodynamic <b>Fixed frequency impedance:</b> Potentiostatic, Galvanostatic, Potentiodynamic, Galvanodynamic <b>Multisine EIS:</b> Potentiostatic, Galvanostatic <b>Intermittent PEIS/GEIS</b>

Interfaces for System	
Auxiliary port	
Digital output	3(open collector)
Digital input	2(photo coupler)
Auxiliary voltage inputs	3 analog inputs: ±10V For measurement of WE vs. CE CE vs. RE or other signal
Analog output	1 analog output: ±10V For stirrer, MFC, RDE, etc.
Misc. port	
Sig generator output	1 analog output for FRA output or waveform generation output
Peripheral communication	I2C to control external devices
Temp. measurement	1 K-type thermocouple input
Zero Resistance Ammeter	2nA ~ 2A ranges

Software	
Max. step per experiment	1000
Shutdown safety limits	Voltage, current, temperature, etc.
Max. sampling rate	20kHz(50usec) in burst mode 500kHz(2usec) in fast sweep mode
Min. sampling time	Unlimited
Sampling condition	Time, dv/dt, dl/dt, temperature, etc.

PC Requirement	
Operating system	WindowsXP SP3/7/8/10(32bit/64bit OS)
PC specification	Pentium4, RAM 1GB or higher
Display	1600x900 high color or higher
USB	High speed 2.0

General	
Dummy cell	One external dummy cell included
Thermocouple	K-type, 1.5 meter long(option)
Auxiliary cable	Option
Misc. cable	Option

The specifications are subject to change without notice.  
Windows is a registered trade mark of Microsoft Corporation.



*Designed by*

**ZIVE LAB**  
*www.zivelab.com*



WonATech Co., Ltd.  
7, Neunganmal 1-gil, Seocho-gu,  
Seoul, 06801, Korea  
Phone: +82-2-578-6516  
Fax: +82-576-2635  
e-mail) sales@wonatech.com  
website: www.wonatech.com

Local Distributor



ISO 9000 & ISO 14000 Qualified